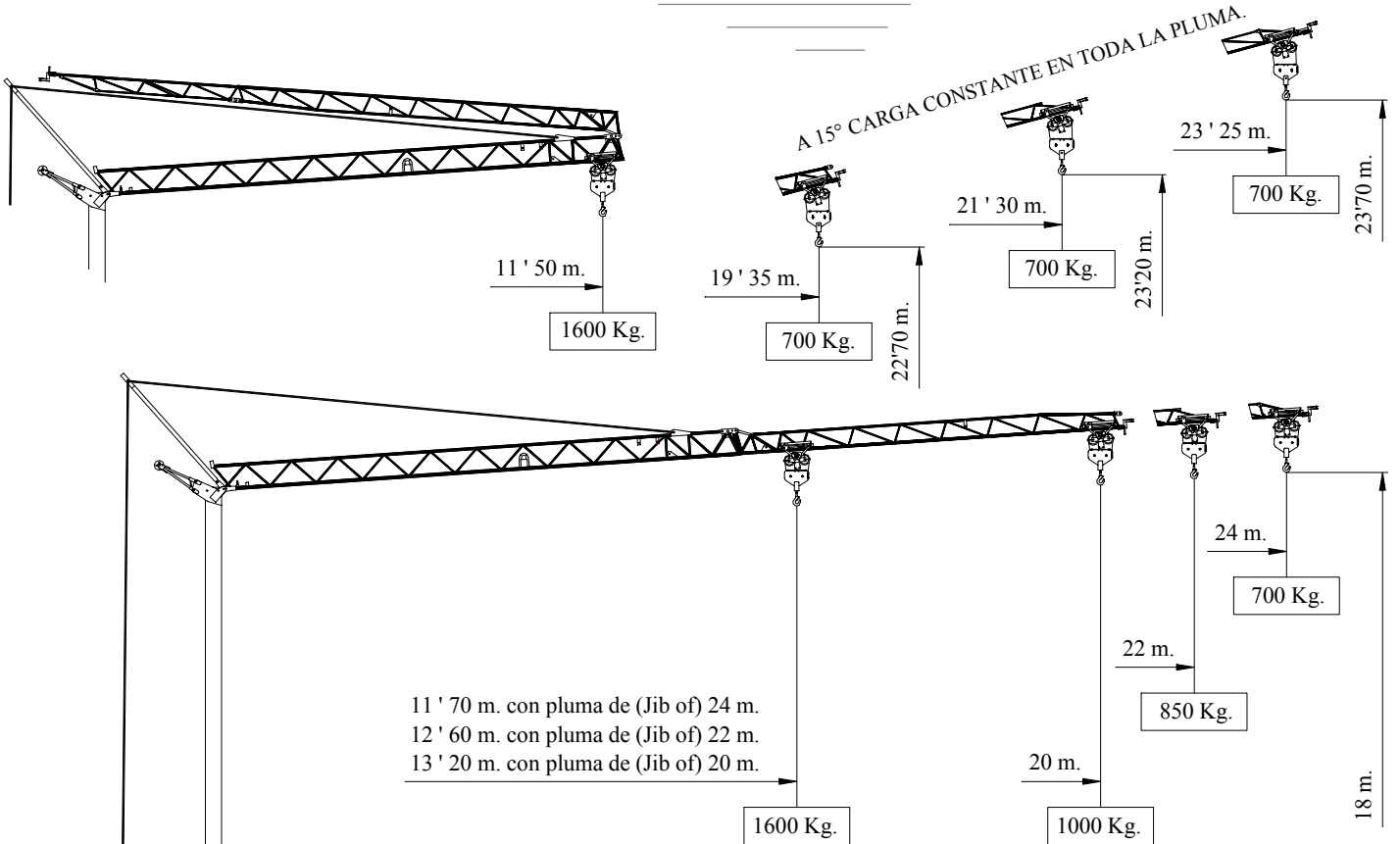


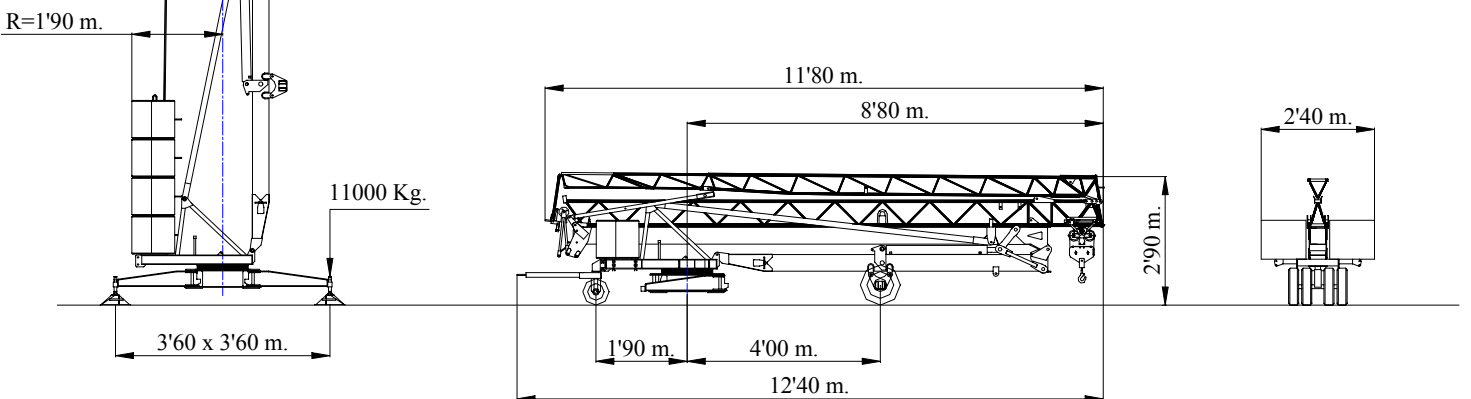
**Scaer**  
CRANES

**GRUA**  
**TRIFASIC**

**H-24**



- EQUIPADA CON VARIADOR DE FRECUENCIA EN GIRO. (Slewing with inverter)



EL FABRICANTE SE RESERVA EL DERECHO DE HACER CUALQUIER MODIFICACIÓN SIN PREVIO AVISO.  
subject to modifications by SISTEMAS FORZA, S.L. without previous warning.






**CE** DIN 15018

LWA  
**99** dB



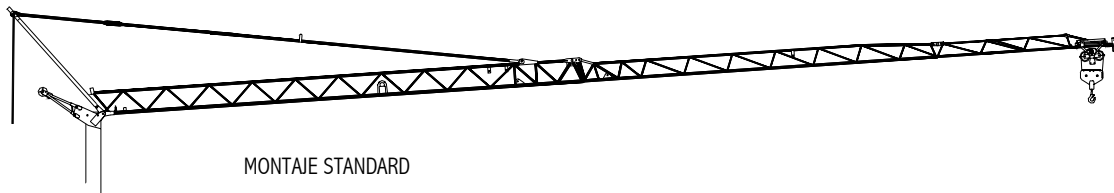
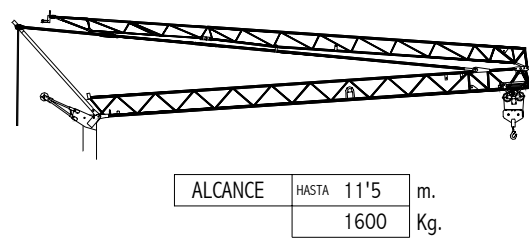
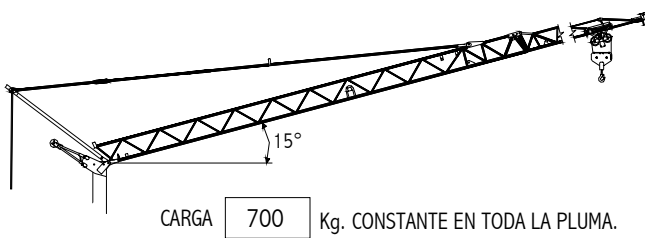
**SISTEMAS FORZA, S.L.**  
Ctra. de Beniaján, Km. 5, Beniaján – MURCIA (Spain)  
Telf.: (+34) 968-82 08 62/66, Fax: (+34) 968-82 48 57

## MECANISMOS / Mechanisms

					
ELEVACION Hoisting		m/min	6	18	36
		Kg	1600	1600	800
		Kw	1'3	5'5	5'5
DISTRIBUCION Trolleying		m/min	37		
		Kw	1'1		
ORIENTACION Slewing		r.p.m	0'25	0'5	0'8
		N.m	25		
MONTAJE Erection		Kw	2'2		

POTENCIA REQUERIDA / Power requirement 8 Kw - 400 V - 50 Hz

## DIAGRAMAS DE CARGA / Load diagrams



MONTAJE STANDARD

ALCANCE	HASTA 11'7	14	16	18	20	22	24	m.
	1600	1305	1120	975	865	775	700	Kg.
ALCANCE	HASTA 12'6	14	16	18	20	22		m.
	1600	1425	1225	1070	950	850		Kg.
ALCANCE	HASTA 13'2	14	16	18	20			m.
	1600	1500	1290	1130	1000			Kg.

## MONTAGGIO / Erection

